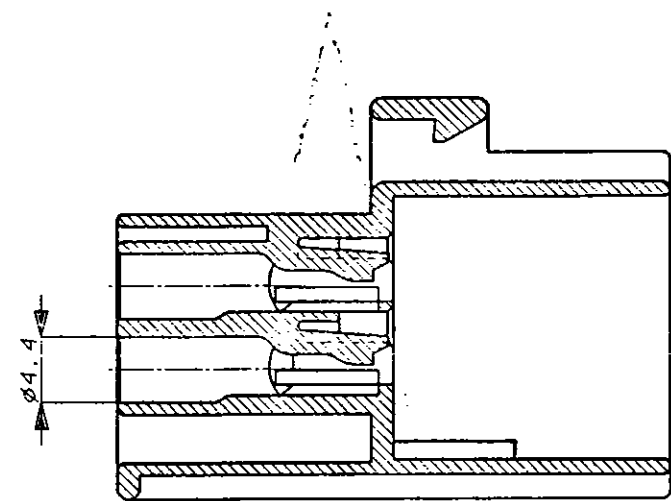
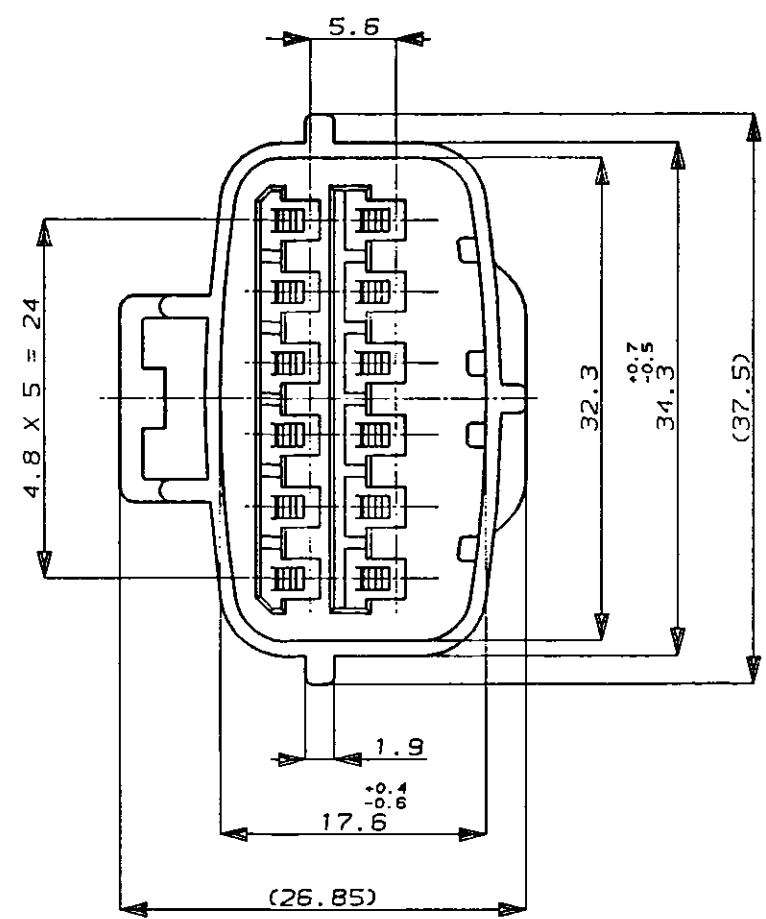
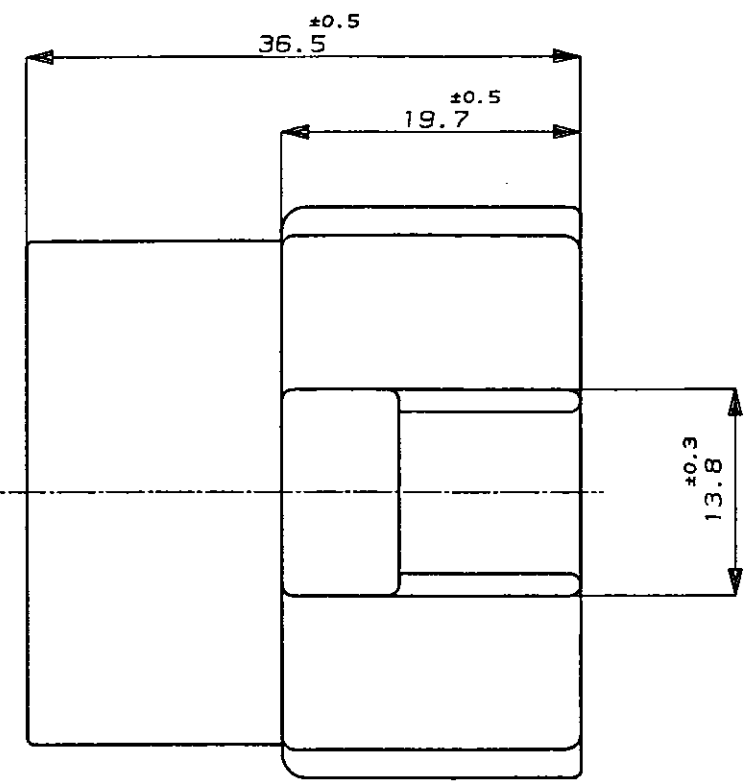
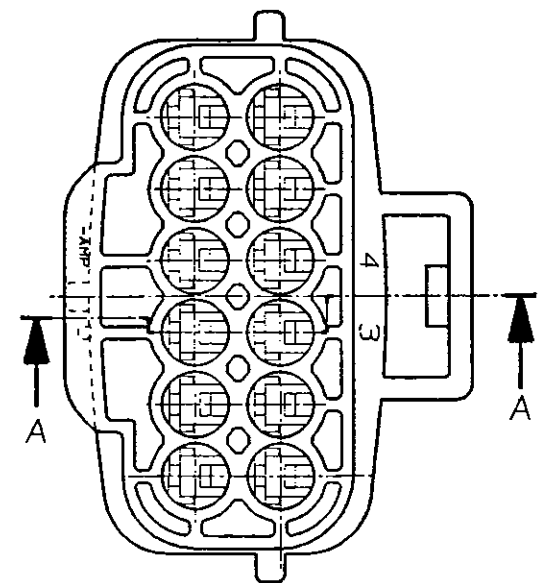


-2 ; 本 ☒
-2 AS SHOWN

NUMBER 174663

3rd ANGLE PROJECTION

METRIC



SECTION 断面 A-A

注 :

- 1 かん合相手型番 ; 174661
- 2 本品はダブルロックプレート P/N 174664を装着して使用する

NOTE :

- 1 FOR PLUG HOUSING (P/N174661)
- 2 THIS PART MUST BE USED WITH DOBLE LOCK PLATE (P/N174664)

DIMENSIONS IN MILLIMETERS. DO NOT SCALE PRINT

				© 1987 BY AMP (Japan) LTD. ALL RIGHTS RESERVED. AMP PRODUCTS COVERED BY PATENTS AND OR PATENTS PENDING		AMP AMP (JAPAN), LTD. Tokyo, Japan	
				WIRE RANGE		INSULATION DIA	
				mm ² (AWG)		mm	
				MATERIAL		FINISH	
				PBT		BLACK	
				DR. K. Oda 5/26'87		DE. K. Oda 5/26'87	
				CHK. M. Matsuzaka 5/26'87		APP. M. Toruchi 1/14'88	
LTR REVISION RECORD				DR	CHK	DATE	
D 変更 REVISED FJ00-0E26-94 Y7 5/28'87				NAME 12P. ECONOSEAL J-MARK II+ CONNECTOR			
C 変更 REVISED J-12311 KO SI 1/29'90				12極 エコノシール J マーク II+			
B 変更 REVISED J-10987 TS MO 11/16'89				CAP HOUSING			
A 変更 REVISED J-10135 TS MT 5/22'85				キャップハウジング			
O 作成 RELEASED YF TS MT 11/74'86				GENERAL TOLERANCE		SIZE	LOC
				0 <= < 10 : ±0.2		B	J
				10 <= < 30 : ±0.25		NUMBER	
				30 <= < 100 : ±0.3		174663	
				ANGLES : ±3°		SCALE	REV.
						2:1	D
						SHEET	
						1 OF 1	

PRINT DIST

AMP-J
REV. 10/'83

CUSTOMER DRAWING